

ROLLER EXPRESS

CORDLESS INSTALLATION INSTRUCTIONS

1

TOOLS

GETTING STARTED – TOOLS NEEDED FOR INSTALLATION



2

UNPACKING THE PARTS

Locate labeled hardware bag (items may vary depending on requested shade).

ITEM	1	2	3	4	5	6 (If Applicable)	7 (If Applicable)	8 (If Applicable)
ITEM NAME	Installation Bracket	Installation Screws	Screw Cap	Bracket Insert	End Caps	(A) Fascia OR (B) Contoured Valance	(A) Outside Mount Extension OR/AND (B) Inside Mount Fascia Bracket	(A) Fascia Standard Returns (B) Valance Returns

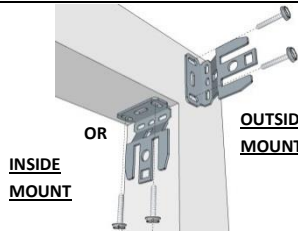
3

BRACKET PLACEMENT

Locate Items 1 & 2 for this section

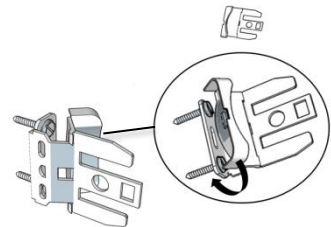
Determine bracket placement (Inside Mount OR Outside Mount).

Using the Drill, secure your brackets with installation screws.



Locate Item 3 for this section

Follow image instructions to cover screws for a complete finish look.



4

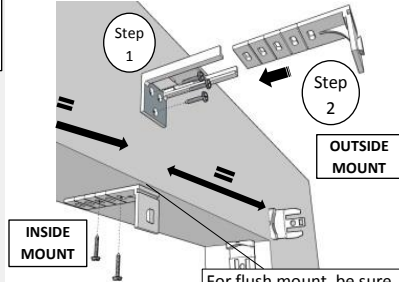
METAL FASCIA PLACEMENT

Locate Item(s) 7 for this section

Item 7(A) will only be included if installing as an outside mount.

Place and secure item(s) 7A and/or 7(B) at an equal in-between distance between the Installation Brackets (item 1).

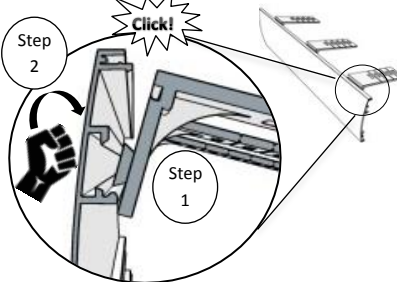
SKIP THIS STEP IF NOT INSTALLING A FASCIA



For flush mount, be sure to leave a front gap the thickness of the fascia.

Locate Item 6(A) for this section

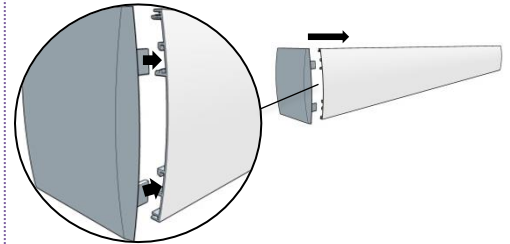
To insert item 6(A) into Inside Mount Fascia Bracket make sure to first position/rest the Fascia according to the image (step 1) and then give a slight tap to the fascia with enough force until you hear an audible "click" (step 2).



SKIP THIS STEP IF NOT INSTALLING RETURNS.

Locate Item 8 (A) for this section

To insert item 8 (A) into Fascia, position the standard return as shown in the image, and insert the return until fully secured.



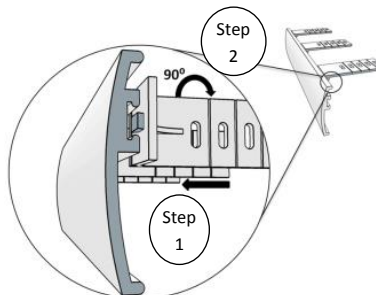
5

VALANCE PLACEMENT

Locate Item 6(B) for this section

To insert item 8(B) into Inside Mount Fascia Bracket, make sure to position the valance where the channel is at the top of the valance (as shown in the image). Then push in the Inside Mount Fascia Bracket and turn it on a 90° angle until is secured.

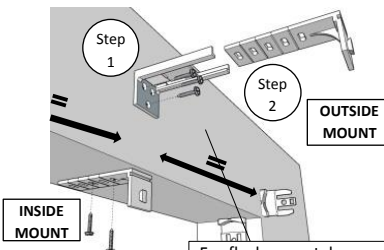
SKIP THIS STEP IF NOT INSTALLING A VALANCE



Locate Item(s) 9 for this section

Item 7(A) will only be included if installing as an outside mount.

Place and secure item(s) 7A and/or 7(B) at an equal in-between distance between the Installation Brackets (item 1).

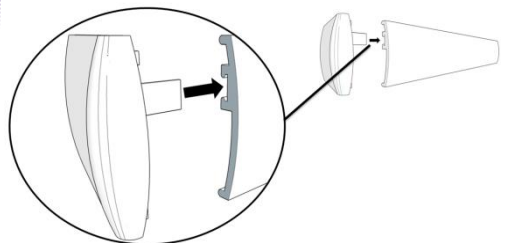


For flush mount, be sure to leave a front gap the thickness of the valance.

SKIP THIS STEP IF NOT INSTALLING RETURNS.

Locate Item 8 (B) for this section

To insert item 8 (B) into Valance, position the valance as shown in the image, and insert the return until fully secured.



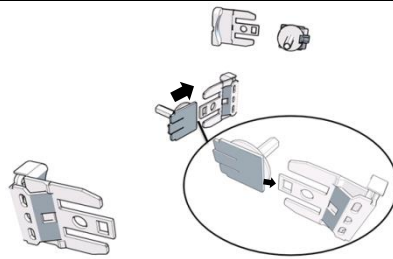
6

**SHADE
PLACEMENT**

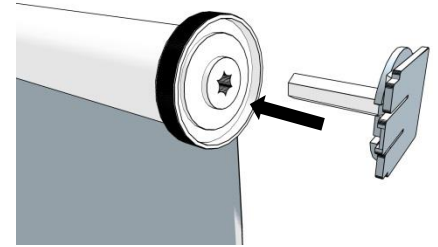
Locate Item 4 for this section

Follow image instructions to insert item 4 into right installation bracket.

*You will hear a "click" once secured when is securely inserted.

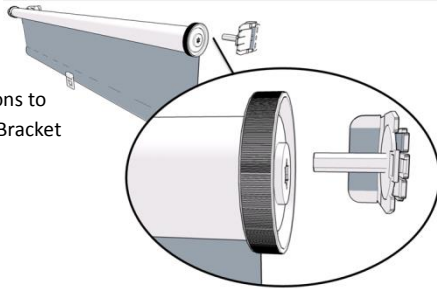


Follow image instructions to insert item 4 into left side clutch opening.

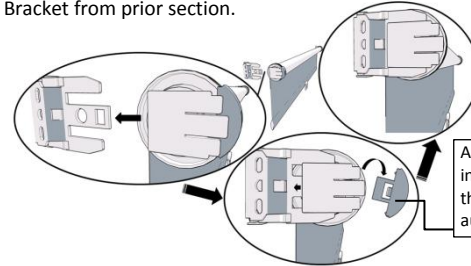


You will need your shade for this section

Follow image instructions to insert your shade into Bracket Insert.



Follow image instructions to insert your shade into the opposing Installation Bracket from prior section.



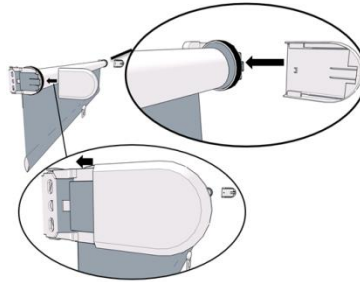
As Bracket Insert is inserted into the installation bracket, the cordless safety red cap will automatically come off.

7

FINISHING UP

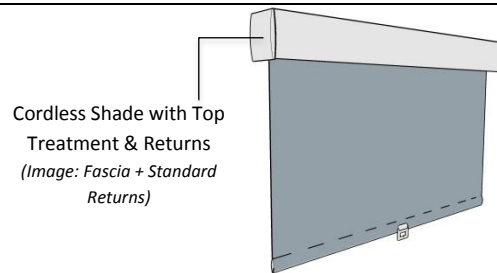
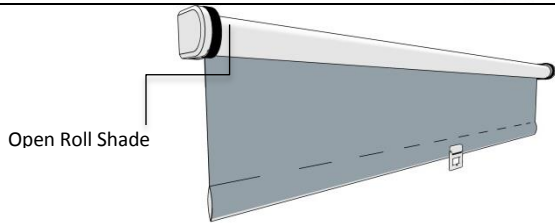
Locate Item 5 for this section

Follow image instructions to insert the end caps into installation brackets for a finish clean look.



8

FINAL LOOKS

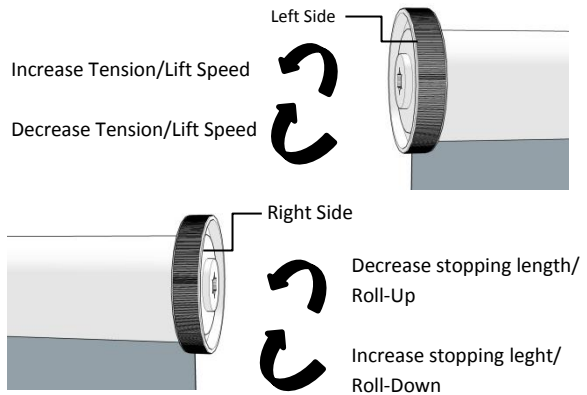
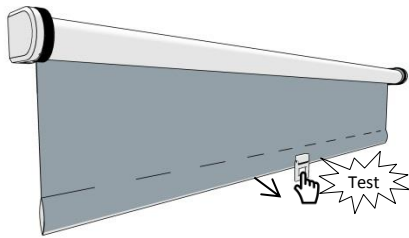


9

**OPERATING
INSTRUCTIONS**

IMPORTANT: Your cordless shade has come to you with the limit sets. However, if you need or would like to change/adjust the limits please follow the instructions located to the right.

Pull shade from bottom handle slightly vertical towards you to roll down/up to desired length and let go to lock shade in place.



TROUBLE SHOOTING

Troubleshooting	Solutions
Shade is rolling up on tube unevenly or tracks:	If you notice the material winds unevenly and begins to track or telescope to one side check to insure that the shade is level. If the shade is not level, remove it from the mounting brackets and shim or reinstall the brackets, as necessary. <i>IMPORTANT NOTE:</i> Operating a shade that is not level will result in damage to the material. Damage caused by operating an unlevelled shade is not covered under our normal warranty.