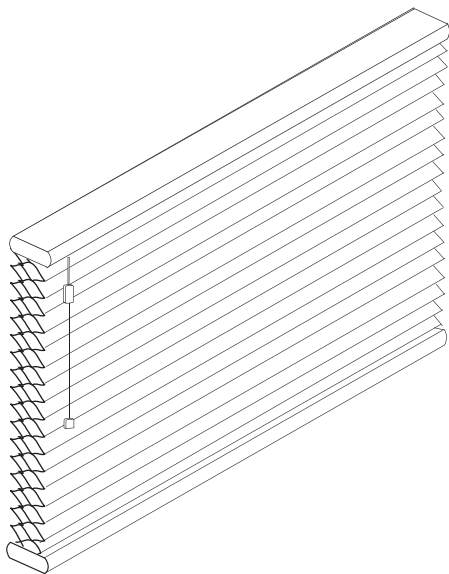

Express Honeycomb Standard & TDBU Operating Systems

INSTALLATION INSTRUCTIONS



WARNING



Cords on window covering products present a potential strangulation hazard.



For child safety, consider cordless alternatives or products with inaccessible cords.



ADVERTENCIA



Las cuerdas y cadenas y persianas presentan un peligro de estrangulación.



Para la seguridad de los niños, considere alternativas sin cuerdas o productos con cuerdas y cadenas inaccesibles.

Express Honeycomb Installation Instructions

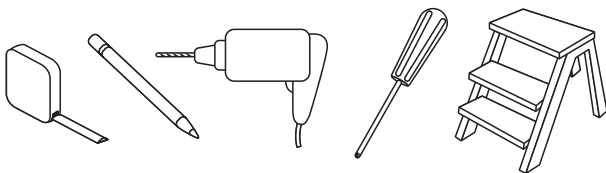
Step 1. Check Package Contents

Mounting hardware kit includes the following:

Part	Quantity
a Mounting Brackets	2 (for 12" to 18" wide shades)
	3 (for 18 1/8" to 36" wide shades)
	4 (for 36 1/8" to 48" wide shades)
	5 (for 48 1/8" to 60" wide shades)
	6 (for 60 1/8" to 72" wide shades)
b 1 1/8" Screws	2 per bracket
c. Hold Down Brackets	2 per shade
d 1/2" Screws	2 per bracket (for hold downs)

Step 2. Tools Required

Screwdriver, tape measure, pencil, drill, drill bits, step ladder



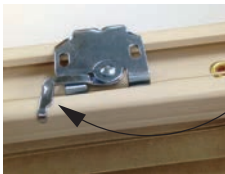
Note: use #6 plastic anchors for dry wall or plaster mounting (not included).
Drill Bits: for screws, use a 3/32" drill bit - for wall anchors, use 1/4" drill bit.

Step 3. Bracket Location and Installation

Your shade may be installed either inside the window frame or outside the window frame.

One mounting bracket should be placed as near as possible to the cordlock. The remaining mounting brackets should be spaced evenly throughout the width of the shade. Always position the brackets such that there is no interference with the cords and/or mechanisms inside the headrail.

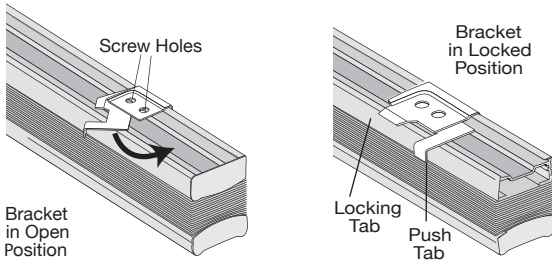
Attaching the brackets:



Rotate arm towards the headrail

Place the swivel brackets in the open position.
Place the headrail against the back of the swivel brackets.
Rotate the swivel arm to snap the locking tab under the headrail.
The shade is locked when the push tab is against the headrail.
(See additional diagrams on next page.)

Attaching the brackets (continued):



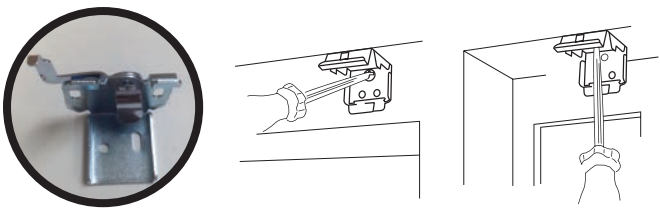
Place the swivel brackets in the open position.
Place the headrail against the back of the swivel brackets.
Rotate the swivel arm to snap the locking tab under the headrail.
The shade is locked when the puch tab is against the headrail.
See additional diagrams on next page.

For Outside Mounting:

Clip the brackets onto the head rail as described above. Hold the shade level at the height desired and center it over the window opening. Mark the exact location of each bracket with a pencil. Remove the brackets from the head rail and position the top of each bracket at the marked location and screw each bracket into the wall or window molding using the 1 1/8" screws, pre-drill the screw holes using a 5/64" drill bit.

For Inside Mounting:

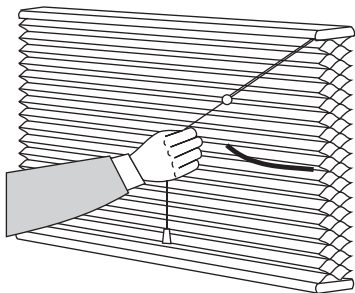
Clip the brackets onto the head rail as described above. Hold the shade in place and make a pencil mark at the rear of each bracket where it contacts the inside of the window frame. Remove the brackets from the head rail and align them with the marks. Attach each bracket using the 1 1/8" screws, pre-drill the screw holes using a 5/64" drill bit.



Express Honeycomb Installation Instructions

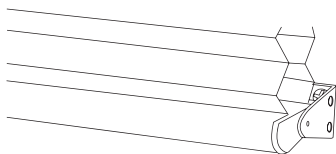
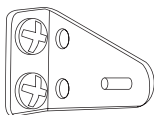
Step 4. How to Operate

To lower or release shade, pull the cord inward toward the center of the shade. To raise or lock shade, pull the cord straight down and outward toward the edge of the shade.



Step 5. Installing Hold-Down Brackets

Hold down brackets are provided for optional use. These brackets should be used only if the shade is to be in a permanently lowered position. With the shade fully lowered, make pencil marks at the outside ends of the bottom rail. Brackets should be lined up to the pencil marks and screwed into place using the 1/2" screws. Insert the pins protruding from the brackets into the holes on both ends of the bottom rail (see illustration).



PROTECT YOUR CHILDREN

Be aware that it is possible for children to strangle in window covering cords. To reduce the occurrence of accident, all cords must be kept out of the reach of children, including infants. Cord cleats are an effective way to implement this essential precaution.

