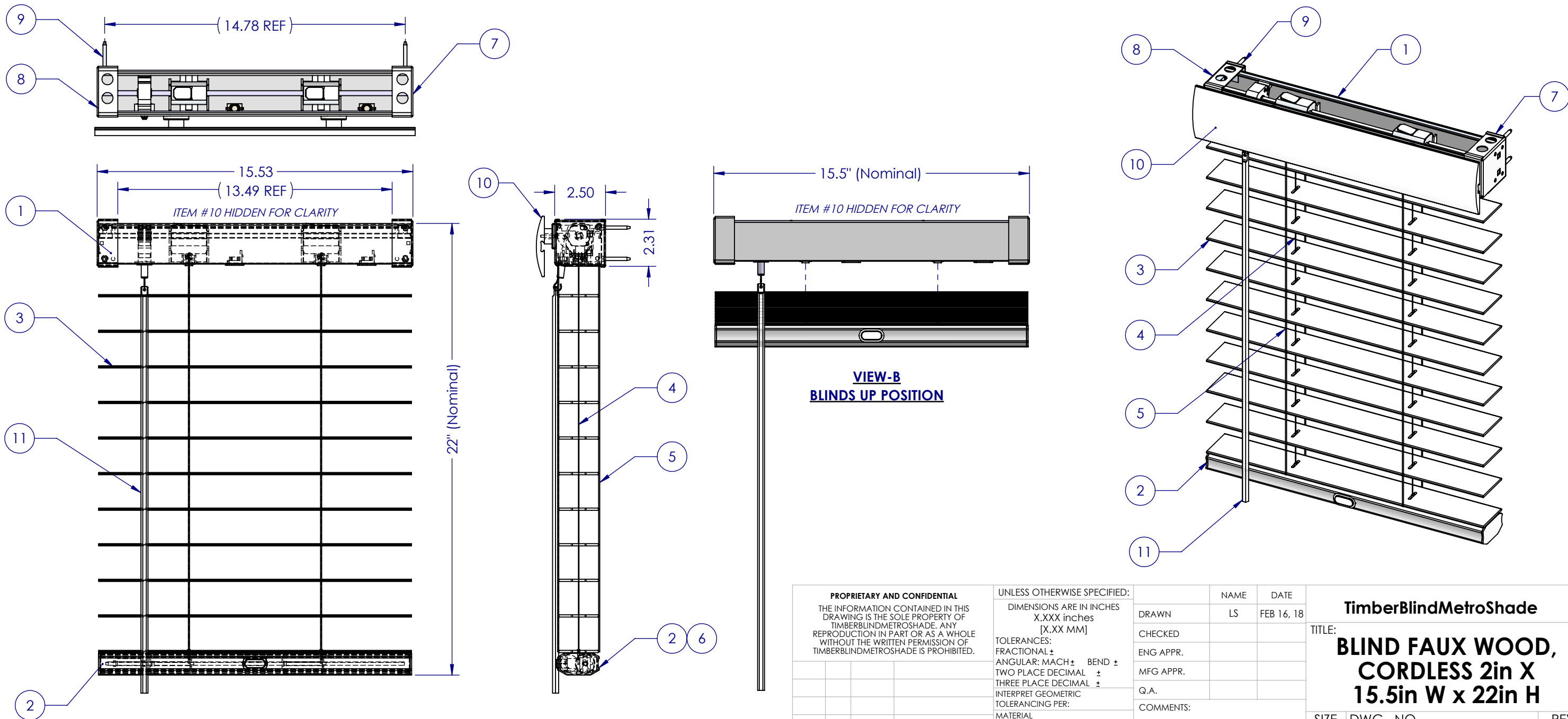


# TimberBlindMetroShade

COMMERCIAL DIVISION

ITEM	QTY	PART NO.	STOCK NO.	DESCRIPTION	COLOR	MATERIAL	THICKNESS	WEIGHT	CURRENT \$
1	1	FWB-CORDLS-HEAD-RAIL-ASSY-101A		HEAD RAIL ASSEMBLY; CORDLESS FAUX WOOD BLINDS	COLOR			0.48	
2	1	FWB-CORDLS-BOT-RAIL-ASSY-101A		BOTTOM RAIL ASSEMBLY; CORDLESS FAUX WOOD BLINDS				0.69	
3	11	FWB-SLAT2IN-12A		SLAT 1.96in X .11in X 15.375in		PP Copolymer		0.105	
4	2	FWBpm-CORDL-C		CORD, CENTER		Nylon 101		0.000	
5	4	FWBpm-CORDT-2		CORD, OUTER DUAL		Nylon 101		0.002	
6	1	FWB-BR-Adhesive_p		ADHESIVE, DOUBLE SIDED STICKER TAPE		PTFE (general)		0.022	
7	1	FWB-HEAD-MOUNT-BRKT-0561W_RH	0561	MOUNTING / INSTALLATION BRACKET 0561 RIGHT, WHITE	W	6061-T6 (SS)		0.059	
8	1	FWB-HEAD-MOUNT-BRKT-0561W_LH	0561	MOUNTING / INSTALLATION BRACKET 0561 LEFT, WHITE	W	6061-T6 (SS)		0.059	
9	4	Hw_no8 x 1.25 HexWshrHd-shtmtl-ZP	0564 TBL	SCREW, #8 x 1.25" HEX CROSS WASHER HD, STL ZP		STL ZP			.069ea
10	1	FWB-HEAD-CNVALANCE-93D01-01a	-	CN-VALANCE FRONT VENEER 15.75in, FAUX WOOD BLIND	W Z77			0.76	
11	1	FWB-US-WAND-24		WAND 24"		Acrylic		0.067	



<b>PROPRIETARY AND CONFIDENTIAL</b> THE INFORMATION CONTAINED IN THIS DRAWING IS THE SOLE PROPERTY OF TIMBERBLINDMETROSHADE. ANY REPRODUCTION IN PART OR AS A WHOLE WITHOUT THE WRITTEN PERMISSION OF TIMBERBLINDMETROSHADE IS PROHIBITED.		UNLESS OTHERWISE SPECIFIED: DIMENSIONS ARE IN INCHES X.XXX inches [X.XX MM]		NAME	DATE	<b>TimberBlindMetroShade</b> TITLE: <b>BLIND FAUX WOOD, CORDLESS 2in X 15.5in W x 22in H</b>
REV	BY	DATE	DESC	DRAWN	LS	
APPLICATION				CHECKED		SIZE DWG. NO. REV <b>B</b> FWB-02CORDLS-BLIND-ASSY-01a
USED ON				ENG APPR.		
NEXT ASSY				MFG APPR.		
				Q.A.		
				COMMENTS:		SCALE: 1:5 WEIGHT: 3.35 SHEET 1 of 1
				FINISH		
				DO NOT SCALE DRAWING		